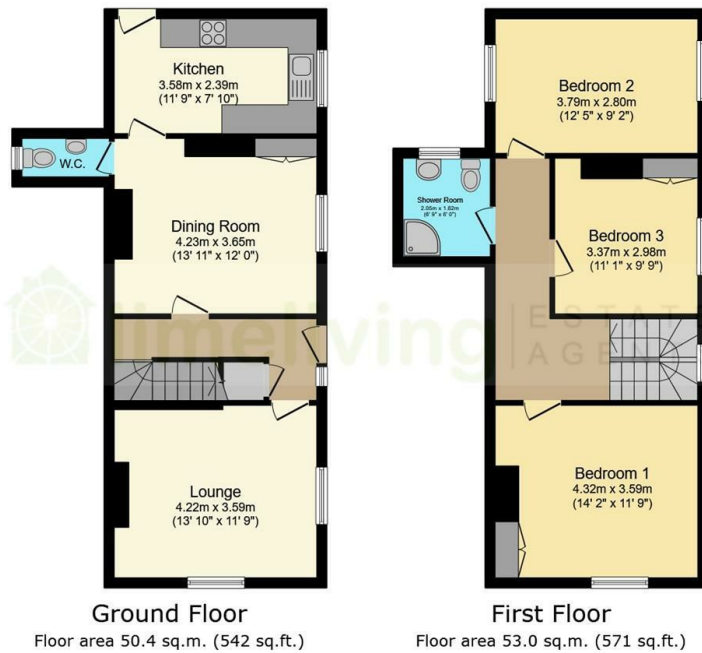




12 Inkersall Road, Staveley, Chesterfield, S43 3JL

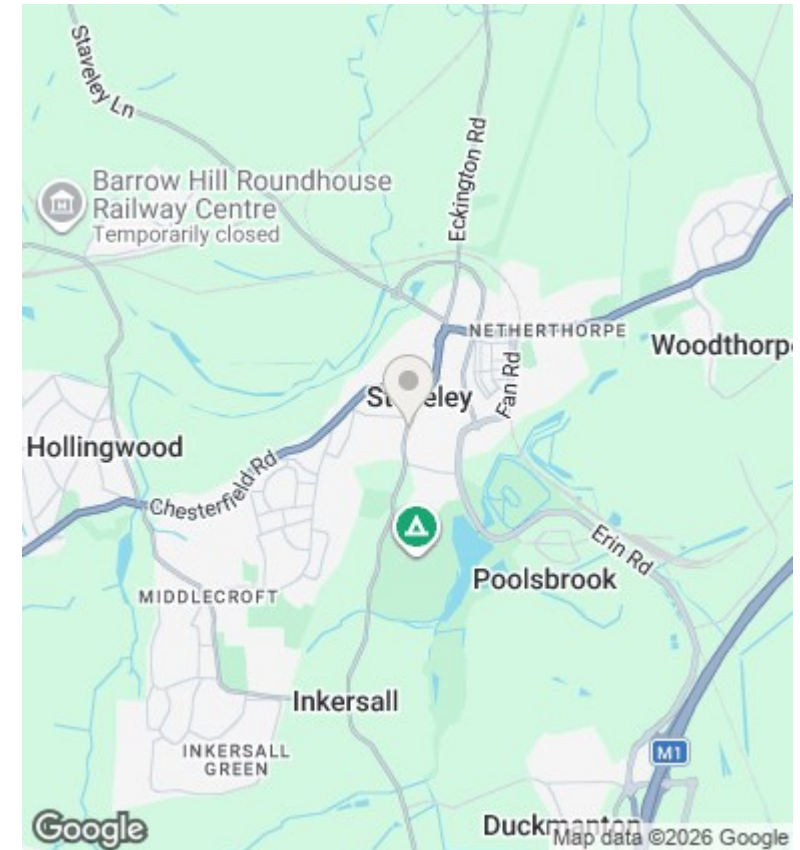
Offers Around £100,000

- Semi Detached House
- Two Reception Rooms
- Shower Room
- Subject to CBC Improvement Notice
- Ideal for Investor
- Kitchen & D/st WC Room
- Rear Yard
- Suitable for HMO
- THREE Bedrooms
- Convenient Location



Total floor area: 103.4 sq.m. (1,113 sq.ft.)

This floor plan is for illustrative purposes only. It is not drawn to scale. Any measurements, floor areas (including any total floor area), openings and orientations are approximate. No details are guaranteed, they cannot be relied upon for any purpose and do not form any part of any agreement. No liability is taken for any error, omission or misstatement. A party must rely upon its own inspection(s). Powered by www.Propertybox.io



Directions

Viewings

Viewings by arrangement only. Call 01246 275 559 to make an appointment.

Council Tax Band

A

EPC Rating:

E

Energy Efficiency Rating		
	Current	Potential
<i>Very energy efficient - lower running costs</i>		
(92 plus) A		
(81-91) B		
(69-80) C		76
(55-68) D		
(39-54) E	51	
(21-38) F		
(1-20) G		
<i>Not energy efficient - higher running costs</i>		
England & Wales	EU Directive 2002/91/EC	